

# Holi

Holi

**Design** Simone Viola

**Materials** Polypropylene, metal, fabric

A design object stands out for aesthetic, shape, and colour, as well as for manageability and functionality.

Yet, only a chair has the power to literally disappear from our sight as we are using it, and if we forget about it while sitting, then it means it is very comfortable; it welcomes the weight of our body and allows us to rest, to work or to sit at a table for a long time.

Indeed, it fully fulfills our expectations about sitting.

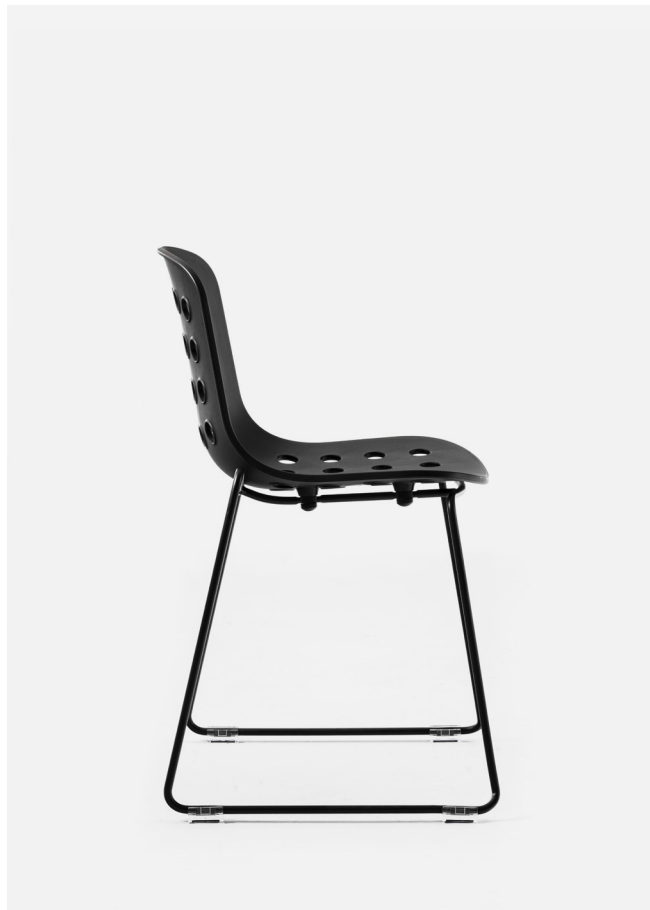
At home, in a café, at the office, wherever we utilize it.

The act of sitting is even more frequent than eating or drinking. We sit tens of times a day without even noticing this automatic yet fundamental action. In fact, only an uncomfortable seat can be felt and noticed as soon as we

sit down on it. Holi is a chair that will embrace your body at the right height, allowing you to comfortably relax your back while maintaining slim, non-encumbering proportions. The collection offers a wide range of sitting solutions, with or without armrests, and two different heights for the stools, which are all stackable.

Holi was designed with either a closed or a perforated seat, creating an ideal stylistic continuum between indoor and outdoor furniture in order to satisfy any living-space requirement.

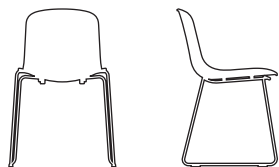
The metallic structure is painted in the exact same shade as the polypropylene shell, giving the impression of a monoblock element.



# Holi

**Closed shell,  
sledge side base  
TO-1611/TO-1603**

Indoor use only  
Stackable x 6



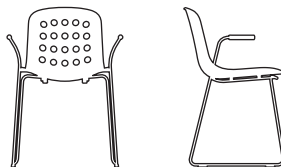
Dimensions (cm)  
D49.5 W55.5 H80  
SH47.5

Weight (kgs)  
6.2

Material  
Seat in polypropylene. Base in metal.

**Open shell,  
sledge armrest base  
TO-1612/TO-1604**

Indoor use only  
Stackable x 6



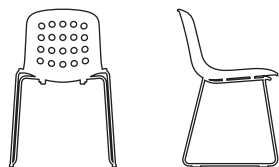
Dimensions (cm)  
D49.5 W59 H80  
SH47.5

Weight (kgs)  
6.7

Material  
Seat in polypropylene. Base in metal.

**Open shell,  
sledge side base  
TO-1612/TO-1603**

Indoor use only  
Stackable x 6

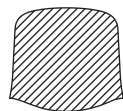


Dimensions (cm)  
D49.5 W55.5 H80  
SH47.5

Weight (kgs)  
5.9

Material  
Seat in polypropylene. Base in metal.

**Easy Up seat cover  
TO-1622**



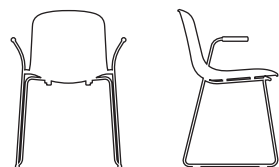
Dimensions (cm)  
D70 W45

Weight (kgs)  
0.4

Material  
Upholstery foam and fabric.

**Closed shell,  
sledge armrest base  
TO-1611/TO-1604**

Indoor use only  
Stackable x 6



Dimensions (cm)  
D49.5 W59 H80  
SH47.5

Weight (kgs)  
7.0

Material  
Seat in polypropylene. Base in metal.

**Sledge base connector  
TO-1620**



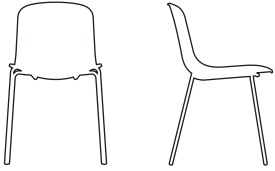
Dimensions (cm)  
D6.5 W15.5 H1.9

Weight (kgs)  
0.1

Material  
Polypropylene.

**Closed shell,  
side base  
TO-1611/TO-1601**

Indoor and outdoor use  
Stackable x 6



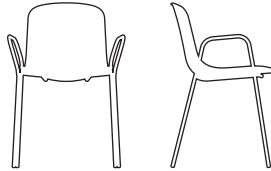
Dimensions (cm)  
D51 W48.5 H79.5  
SH46.5

Weight (kgs)  
4.6

Material  
Seat in polypropylene. Base in metal.

**Closed shell,  
armrest base  
TO-1611/TO-1602**

Indoor and outdoor use  
Stackable x 6



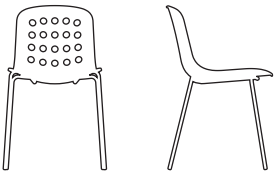
Dimensions (cm)  
D51 W55 H78.5  
SH47

Weight (kgs)  
5.2

Material  
Seat in polypropylene. Base in metal.

**Open shell,  
side base  
TO-1612/TO-1601**

Indoor and outdoor use  
Stackable x 6



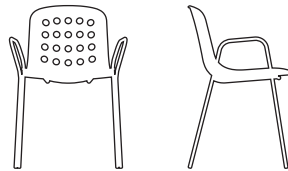
Dimensions (cm)  
D51 W48.5 H79.5  
SH46.5

Weight (kgs)  
4.4

Material  
Seat in polypropylene. Base in metal.

**Open shell,  
armrest base  
TO-1612/TO-1602**

Indoor and outdoor use  
Stackable x 6



Dimensions (cm)  
D51 W55 H78.5  
SH47

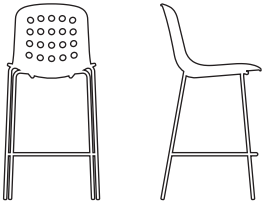
Weight (kgs)  
5.0

Material  
Seat in polypropylene. Base in metal.

# Holi

**Open shell,  
counter stool base  
TO-1612/TO-1606**

Indoor and outdoor use  
Stackable x 6



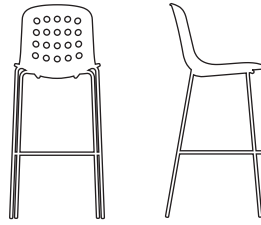
Dimensions (cm)  
D51 W54 H100  
SH67

Weight (kgs)  
5.8

Material  
Seat in polypropylene. Base in metal.

**Open shell,  
bar stool base  
TO-1612/TO-1607**

Indoor and outdoor use  
Stackable x 6



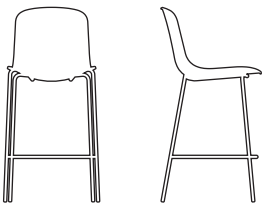
Dimensions (cm)  
D52.5 W54 H108.5  
SH77

Weight (kgs)  
6.0

Material  
Seat in polypropylene. Base in metal.

**Closed shell,  
counter stool base  
TO-1611/TO-1606**

Indoor and outdoor use  
Stackable x 6



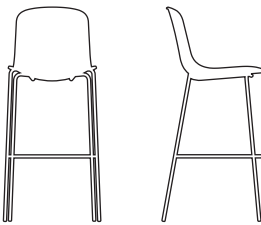
Dimensions (cm)  
D51 W54 H100  
SH67

Weight (kgs)  
6.0

Material  
Seat in polypropylene. Base in metal.

**Closed shell,  
bar stool base  
TO-1611/TO-1607**

Indoor and outdoor use  
Stackable x 6



Dimensions (cm)  
D52.5 W54 H108.5  
SH77

Weight (kgs)  
6.2

Material  
Seat in polypropylene. Base in metal.

## Holi colours & finishes

---

Shell and base



White



Black



Red terracotta



Olive gray

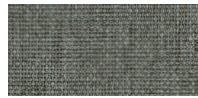
---

Easy Up seat cover Gabriel fabric

MEDLEY by **Gabriel**



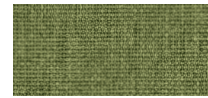
Black



Light gray



Red terracotta



Olive gray

---

Connector



Black